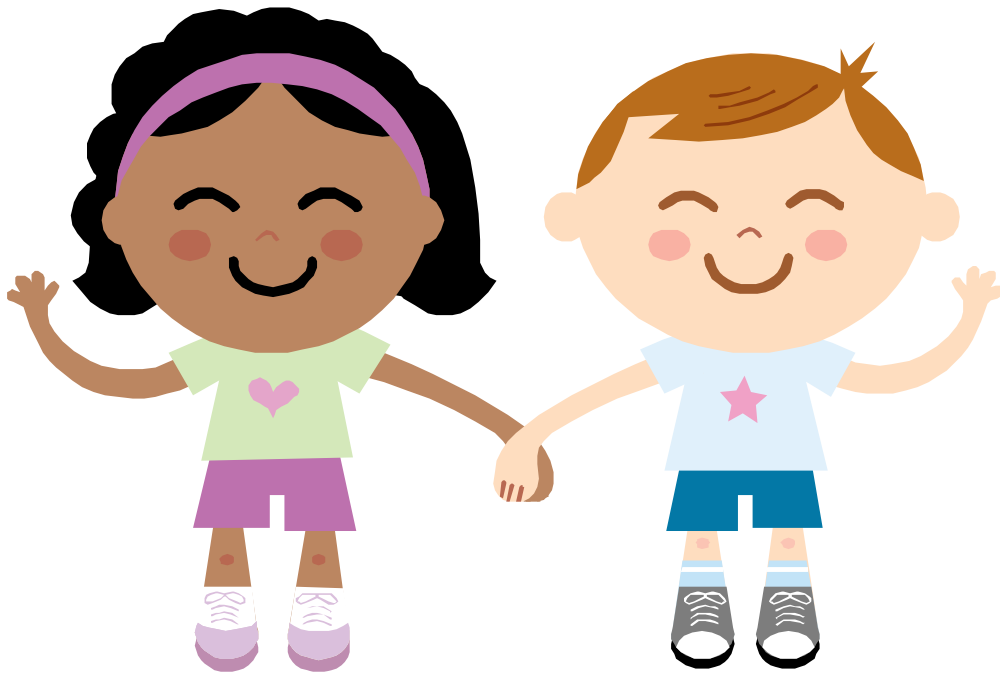


St Charles Catholic Primary School



The Education For Looked After Children Policy

Designated Teacher for looked After Children: Tony Lynch
Designated Governor for Looked After Children: Dave Hallbery
Date policy adopted by the Governing Body: Autumn 2020
Date policy to be reviewed: Autumn 2021

St Charles School Policy

The Education For Looked After Children

Contents

	Page
The School Mission Statement	2
Spiritual and Moral development	3
Introduction	3
Aims of this policy	3
The role of the Governing Body	4
The role of the Designated Teacher (DT)	4
The role of the Personal Education Plan (PEP)	5
The responsibilities of others within the school	5
The responsibilities of the designated teacher to others beyond the school	5

St Charles School Policy For
The Education For
Looked After Children

The School Mission Statement



"Love God Love Your Neighbour"

St Charles Catholic Primary School exists to serve the Roman Catholic community of St Pius X and its neighbouring parishes. We are here to educate the children in a community which has the Gospel values, traditions and beliefs of the Catholic Faith at the centre of its ethos.

Spiritual and Moral development

At St. Charles Catholic Primary School we believe that each child should learn in an atmosphere surrounded by love.

We aim to promote a learning atmosphere where positive values in behaviour and attitudes are created.

In every class all children will be given the opportunity to develop his/her true potential academically, morally and spiritually.

The children in our care will be taught to value each other and the world around them. In dealing with others they will show forgiveness and patience, ready to comfort those in need.

They will be taught to appreciate the aesthetic value of the world we inhabit. Opportunities to do this will be sought across the subject range both in the academic and the more creative aspects of the curriculum.

This policy has been developed by the Governing Body and staff at St Charles School with due regard to the DfE Statutory Guidance for school governing bodies entitled, 'The role and responsibilities of the designated teacher for looked after children' (2009)

Introduction

The staff and Governing Body of St Charles Catholic Primary School place the highest priority on the responsibilities they have to actively contribute to safeguarding and promoting the welfare of Looked After Children, in accordance with Section 175 of the Education Act 2002.

The Governing Body and staff of St Charles are committed to providing a safe and stimulating environment which promotes the social, physical and moral development of Looked After Children. All reasonable measures are taken to ensure that the risks of harm to their welfare are minimised.

Aims of this policy

The aim of this policy is to ensure that the Looked After Children on roll at St Charles School have their individual needs met and receive equal opportunity in education despite any disadvantage they have encountered or continue to encounter in their lives.

To ensure that this aim is met the following roles and responsibilities have been agreed within the school.

The role of the Governing Body

- To ensure the appointment of a suitably qualified designated teacher to promote the educational achievement of Looked after Children (LAC). This role is currently held by the Deputy Head Teacher.
- To ensure the designated teacher undertakes appropriate training.
- To review reports from the designated teacher given as appropriate.
- To receive and act on matters raised in the report in order to support the increased effectiveness of the designated teacher role.
- To identify a named governor who will liaise with the DT to ensure the implementation of this policy
- To review this policy annually

The role of the Designated Teacher (DT)

- To maintain up to date records of LAC on roll at the school
- To promote a culture of high expectations and aspirations
- To keep an overview of the academic progress and needs of each LAC pupil and to challenge adults where necessary
- To ensure the young person has a voice in setting learning targets and making decisions about their education
- To advocate on behalf of LAC
- To prioritise LAC for one to one tuition and other whole school initiatives
- To assist foster carers in supporting learning at home
- To keep abreast of National and local policies and initiatives aimed at supporting the education of LAC
- To be the point of contact for all agencies requesting information about the child
- To promote the differentiation of the curriculum and teaching strategies for looked after children
- To lead on the development and implementation of the Personal Education Plan in School
- To run training for staff regarding LAC issues as necessary

- To ensure that the school does everything possible to maximise the educational stability for the child

The role of the Personal Education Plan (PEP)

- The PEP forms part of the care plan and will be completed within 20 days when a new LAC is on the school roll
- Thereafter the PEP should be done after 3 months and then at least 6 monthly
- The PEP will be shared with key staff who plan and deliver the support needed by the child
- The school recognises that it has a responsibility for making the PEP a living and useful document.
- The PEP will be updated at least 6 monthly with educational progress, current assessment levels, target levels and other key data
- Effective arrangements will be made for the speedy transfer of information such as the PEP on the transfer of a child to a new teacher or school.

The responsibilities of others within the school

- The class teacher will regularly liaise with the DT regarding issues for LAC and provide targets and assessment information for the PEP
- The Head Teacher, SENCO and SLT meet regularly with the DT regarding the education of LAC at the school
- Subject/class teachers will seek advice and support from the DT as necessary
- All staff will attend appropriate training regarding LAC issues as required

The responsibilities of the designated teacher to others beyond the school

- To ensure there is central point of contact in school for LAC related enquiries
- To promote joined up working with other agencies
- To work with social care to minimise disruption to the child's education.
- To ensure that key school documents and reports are communicated to social workers, birth parents and carers as appropriate.
- To ensure that information is shared through the PEP and other professional meetings

This policy links with a number of other school policies:

Admissions Policy
Equal Opportunities Policy

Child Protection and Safeguarding Policy
Gifted and Talented Policy
Behaviour and Expectations Policy
Anti-bullying Policy

Publications: -

The roles and responsibilities of the designated teacher for looked after children –
Statutory guidance for school governing bodies. (DCSF 2009)

Improving the attainment of looked after young people in primary schools – Guidance
for School. (DCSF 2009)

Improving the attainment of looked after young people in secondary schools –
Guidance for School. (DCSF 2009)